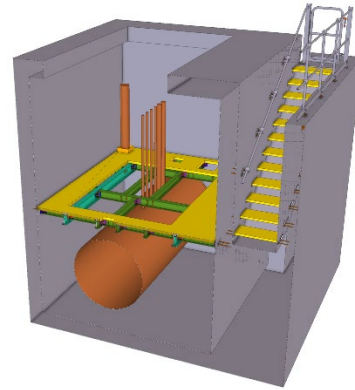
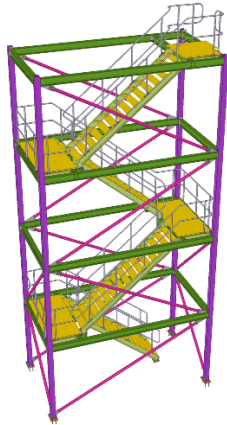


The Structural Drawing Office

www.thestructuraldrawingoffice.com | hello@thestructuraldrawingoffice.com | +44 (0) 1738 700 191

The Client

Access Design & Engineering came to The Structural Drawing Office because most subcontract drawing offices cannot deliver complex models, details and drawings in line with their company standards, which are integral to their workflow. Project Management felt out of the loop with the subcontract designers who they heard from irregularly and had no relationship with.



The Project

Horsley Water Treatment Works is undergoing a £46m upgrade which is being delivered by JV main contractors Interserve Construction and Doosan Enpure while the plant design was carried out by wood.

Access Design & Engineering were appointed as a specialist contractor and chose The Structural Drawing Office working in collaboration with close partners Contract Design Northern, to provide additional Tekla Structures design and draughting support to their in-house design teams. Working in close collaboration with their own drawing office, structural engineers and project managers, The Structural Drawing Office delivered the full project which consisted of Approval and Construction issue GA drawings along with fully detailed models and fabrication packages of drawings, reports and CNC data.

The project consisted of both Steel and GRP structures including; Stair Towers, Personnel Walkways, Access Platforms, Ladders and Equipment Supports which required sophisticated details to be developed to facilitate a seamless interface with the civil and mechanical requirements and details, which was delivered over a 12 month design programme, approximately 1,000 man hours and regular face to face design meetings.

The Client Said

Karl Wrightson, The Group Technical Manager for the Lionweld Group; *"We can rely on The Structural Drawing Office to develop accurate, cost effective and practical designs, which is why we choose to work closely with Ciaran when we need support on challenging projects. We welcome his refreshingly proactive approach to solving design issues and communication of information, which keep projects moving."*

Access Design & Engineering are one of the industrys most experienced designers, manufacturers, suppliers and installers of metalwork solutions and are part of the Lionweld Group.